

T-WALL SERIES

Model #SPT350
Model #SPT353
Model #SPT354

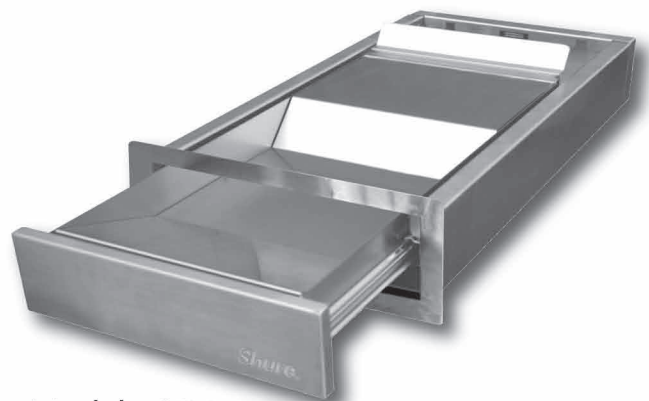
Shure **SAFE**®



Model #SPT350



Model #SPT353



Model #SPT354

T-Wall Series Drawers are an ideal solution for pharmacies, convenience stores, correctional facilities, law enforcement, financial facilities, fast food restaurants and government facilities.

FEATURES

- Economical security solution for cashier and ticket windows, administrative, retail and convenience store environments, outdoor payment kiosks and other point-of-sale contacts
- Suitable for walk-up or drive-thru applications in interior and exterior environments
- Designed with an extending tray housing for installation through walls, in countertops with a window above, in kiosks or through other window arrangements
- All models include a UL® level 3 bullet resistant faceplate insert
- Models #SPT353 and SPT354 are designed for installation in up to an 8" thick wall
- Model #SPT350 is designed for installation in up to a 4 1/2" thick wall
- All models include a removable deal tray insert with a curved interior for easy coin and currency removal

Model #SPT350

Overall Size - 12"W x 16 3/4"D x 3 3/4"H
Frame Face - 14"W x 5 3/4"H
Transfer Area - 9 1/2"W x 5 1/2"D x 1 7/8"H
Wall Opening - 12 1/4"W x 4"H
Weight - Approx. 24 lbs.

Model #SPT353

Overall Size - 12"W x 24"D x 3 3/4"H
Frame Face - 14"W x 5 3/4"H
Transfer Area - 9 1/2"W x 8 1/16"D x 1 7/8"H
Wall Opening - 12 1/4"W x 4"H
Weight - Approx. 34 lbs.

Model #SPT354

Overall Size - 12"W x 24"D x 3 3/4"H
Frame Face - 14"W x 5 3/4"H
Transfer Area - 9 1/2"W x 8 1/16"D x 1 7/8"H
Wall Opening - 12 1/4"W x 4"H
Weight - Approx. 44 lbs.

FORM #CS350-1 / 2-8-17

© 2017 Shure Manufacturing Corporation

See Our Website For Our Entire Line Of Quality Security Drawers, Pass-Thru Products, Shelving & Storage & Secure Case Work Cabinetry!

www.shuresafe.com