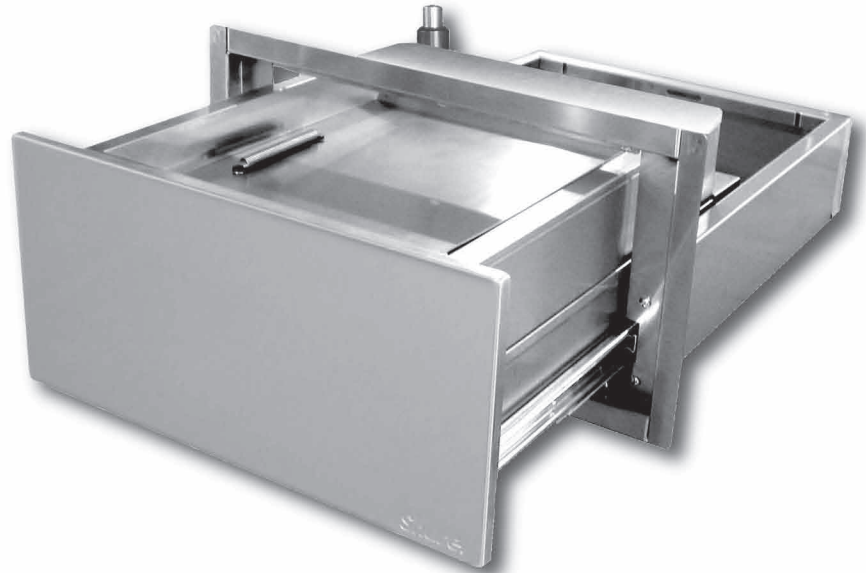


# T-WALL SERIES

## Model #SPT198

**Shure** **SAFE**®

T-Wall Series Drawers are an ideal solution for pharmacies, convenience stores, correctional facilities, law enforcement, financial facilities, fast food restaurants and government facilities.



Model #SPT198

## FEATURES

- Economical security solution for cashier and ticket windows, administrative, retail and convenience store environments, outdoor payment kiosks and other point-of-sale contacts
- Suitable for walk-up or drive-thru applications in interior and exterior environments
- Designed with an extending tray housing for installation through walls, in countertops with a window above, in kiosks or through other window arrangements
- Full-length removable deal tray for document, cash, credit and smaller transactions
- Removing the deal tray allows for larger bulkier items to be transferred through the drawer
- Includes a UL® level 3 bullet resistant faceplate insert
- Designed for up to an 8" thick wall

### Model #SPT198

Overall Size - 18"W x 25"D x 9"H  
Frame Face - 21 3/8"W x 11 1/8"H  
Transfer Area - 13 5/8"W x 17 3/4"D x 7 7/8"H  
Wall Opening - 19 5/8"W x 9 1/2"H  
Weight - Approx. 67 lbs.

### Optional Accessory:



Free-Standing Cup Holder  
Model #SPT199

FORM #CS198-1 / 2-8-17  
© 2017 Shure Manufacturing Corporation

See Our Website For Our Entire Line Of Quality  
Security Drawers, Pass-Thru Products, Shelving  
& Storage & Secure Case Work Cabinetry!

[www.shuresafe.com](http://www.shuresafe.com)