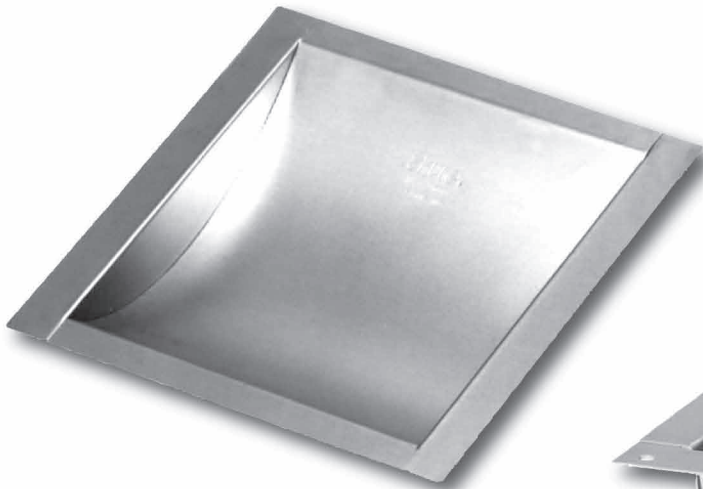


# DT SERIES

**Shure** **SAFE**®

Model #SPT100, Model #SPT158  
Model #SPT159, Model #SPT094



Model #SPT100



Model #SPT094

**Ideal solution for transactions in any market including 24 hour facilities.**

## FEATURES

- Perfect security solution for cashier windows or other secured areas
- #SPT100, #SPT158, #SPT159 are stationary for installation in countertops
- #SPT094 features a stationary base and a sliding tray for installation in countertops
- All models have a curved interior for easy coin and currency removal
- Custom sizes available upon request

### Model #SPT100

Overall Size - 10"W x 8 1/8"D x 1 5/8"H  
Transfer Area - 8"W x 6 3/4"D x 1 9/16"H  
Countertop Cut-Out - 8 1/4"W x 7 1/8"D x 1 7/8"H  
Weight - Approx. 3 lbs.

### Model #SPT159

Overall Size - 14"W x 12"D x 2"H  
Transfer Area - 12"W x 10"D x 1 7/8"H  
Countertop Cut-Out - 12 1/4"W x 11"D x 1 7/8"H  
Weight - Approx. 5 lbs.

### Model #SPT158

Overall Size - 12"W x 9 1/4"D x 1 5/8"H  
Transfer Area - 10"W x 8"D x 1 9/16"H  
Countertop Cut-Out - 10 1/4"W x 8 1/4"D x 1 13/16"H  
Weight - Approx. 4 lbs.

### Model #SPT094

Overall Size - 10"W x 15"D x 1 1/2"H  
Transfer Area - 7 3/4"W x 6 1/4"D x 1 1/4"H  
Countertop Cut-Out - 8 1/4"W x 13 1/4"D x 1 9/16"H  
Weight - Approx. 7 lbs.

FORM #CS094-1 / 2-8-17

© 2017 Shure Manufacturing Corporation

See Our Website For Our Entire Line Of Quality  
Security Drawers, Pass-Thru Products, Shelving  
& Storage & Secure Case Work Cabinetry!

[www.shuresafe.com](http://www.shuresafe.com)